



# SOCOMENIN

Engineering, Manufacturing, Industrial Construction and Maintenance

**Since 1975**

## CONTENTS

### General Presentation

- P2. CEO Message
- P3. Overview
- P4. Company Structure
- P4. History
- P5. Location / References
- P6. SOCOMENIN Group
- P7. Quality Management
- P8. HSE

### Manufacturing Division

- P11. Carbon Steel Equipment
- P14. Stainless Steel Equipment
- P15. Prefabrication Pipe Work
- P16. Wind towers
- P17. Structural steelwork
- P19. Quality control, inspection and testing
- P21. Surface treatment
- P23. Logistics

### Construction & Maintenance Division

- P27. Engineering
- P28. Procurement
- P29. Project & Construction Management
- P30. Rehabilitation & Maintenance of Industrial Plant

### Fields Of Activities

- P32. ■ Oil & Gas and Petrochemical
- P33. ■ Water Industry
- P34. ■ Power Generation & Renewable Energy
- P35. ■ Chemical & Mineral Industries
- P36. ■ Iron & Steel Industries
- P37. ■ Food Industry
- P38. Customer satisfaction

SOCOMENIN  
SOC\_MD\_R06\_08\_19

## CEO Message

We have always believed that our success depends on the success of our customers. That's why SOCOMENIN continues to set the industry standard for quality and service excellence: Our on-going commitment to provide our customers with the best equipment and services, solutions available, both now and for the future.

As always, great care is taken in the selection, processing, handling and delivery of our products & services in order to meet local and international regulations, and – just as important – to continue to meet the highest standards for quality and consistency. We give you our best, so that you can do your best.

To accomplish our mission, we have established an alliance with our employees, customers, and suppliers to provide products and services that meet our customers' requirements.

As a matter of fact, I would like to take this opportunity to pledge that SOCOMENIN team will endeavor to devote full efforts to exceed our customers' expectations & fully satisfy their needs and requirements.

"Optimal results, it's much more than a slogan: It's a commitment. Our history proves it; our future is built on it."

Nasr Fersi  
President & CEO

## Overview

Since 1975, SOCOMENIN has been involved in the field of steel equipment manufacturing and construction & Maintenance of industrial plants on an EPC basis.

SOCOMENIN activities have always focused on customer satisfaction and constant improvement of products and services quality.



## Company Structure

SOCOMENIN has two main Divisions: Manufacturing Division and Construction & Maintenance Division:

### MANUFACTURING DIVISION

- Pressure Vessels: Columns, Separators, Scrubers...
- Storage Tanks
- Prefabrication Pipe racks, Manifolds and piping
- Wind Towers
- Steel Structure

### CONSTRUCTION & MAINTENANCE DIVISION

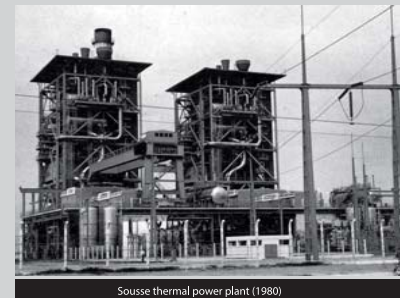
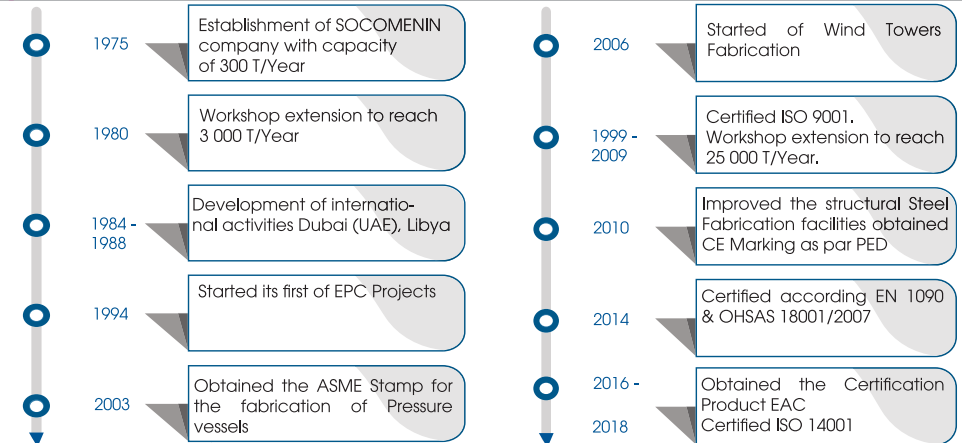
- Turnkey Projects
- Industrial Plant Installation
- Overhauling & Maintenance of Industrial plants

## Field Of Activities

- Oil & Gas and Petrochemical
- Water Industry
- Power Generation & Renewable Energy
- Chemical & Mineral Industries
- Iron & Steel Industries
- Food Industry



## History



Sousse thermal power plant (1980)

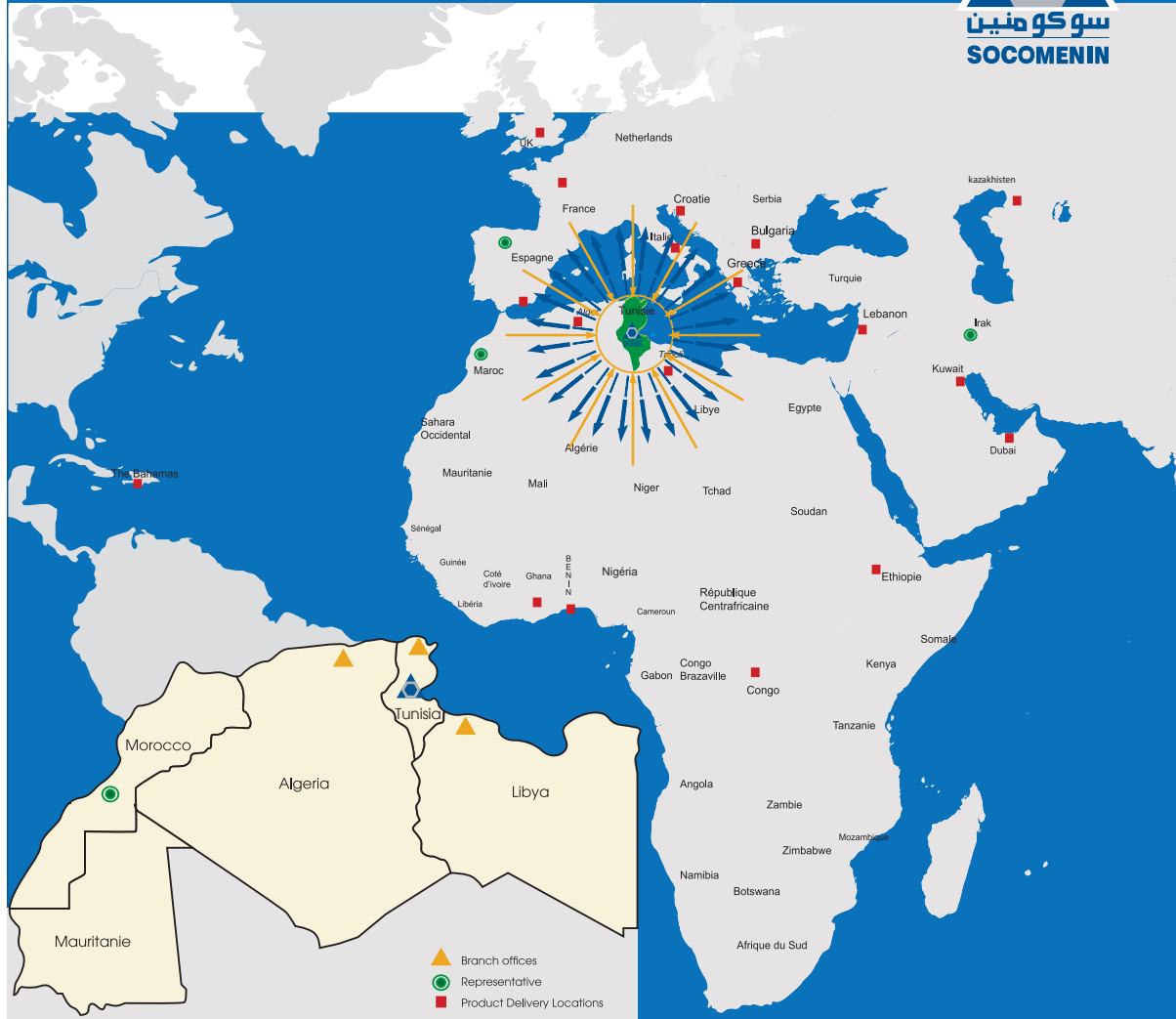


Engineering department (1979)



CPG Kaf Chfair (1978)

# Your Partner For your Projects in Africa, Europe & The Middle East



Equipment Manufacturing, Industrial Construction, Maintenance & Technical Assistance and Training.



Equipment Manufacturing, Industrial Construction, Maintenance & Technical Assistance and Training for local market.



Industrial Engineering Technologies.



Technical Assistance and Industrial Maintenance



Being aware that the type of products and services which are performed by SOCOMENIN have an impact on the integrity of our client assets, SOCOMENIN considers that the quality of those products and services shall be within its first strategic axes level. SOCOMENIN approach to achieve and maintain the above goal is to implement and continually improve an integrated system covering the following aspects:

- Generic Quality Management System as per ISO 9001:2015
- Product quality assurance and control system as per:
  - ASME Code Section VIII Div1 ("U" Designator) for pressure vessels
  - ASME Code Section I ("S" Designator) for power boilers
  - NBIC ("R" Stamp) for repair and alteration of pressure vessels and power boilers
  - Pressure Equipment Directive 2014/68/EU (CE Marking)
  - EN 1090-1 and 2 and 305/2011/EU for structural components
  - Russian technical regulation TR-CU 032/2013 (EAC marking) for pressure vessels
- Special Process quality assurance system as per ISO3834-2 for welding



ISO 9001



ASME "U"



ASME "S"



"PED SGS"



"ISO3834"



"NB"



"R" Stamp



EAC



"CE EN 1090"

Safety and environmental performance will continue to be SOCOMENIN major priority as we go forward. The health, safety and well-being of our staff are our first priorities. It is our mission to foster health and healing for the people under our control and environmental aspects in the complete life cycle of our activity. SOCOMENIN is thus dedicated to provide a safe and healthful workplace with responsible environmental practices essential to the success of our business.



## SAFETY FIRST!



ISO 14001



OHSAS 18001

SOCOMENIN Environment & Occupational Health & Safety Management System is certified as per ISO 14001 and OHSAS 18001.







## Manufacturing Division

*SOCOMENIN is the leader of steel equipment manufacturing companies in North Africa.*

*SOCOMENIN is specialized in the following products:*

- Pressure vessels: Columns, Bullets, Skid mounted Separators, Scrubbers,....
- Storage tanks
- Sand filters
- Pippings, Skids, Manifolds & Pig Launchers Prefabrication
- Marine Gaz Scrubber, Silos...
- Offshore Steel Equipments
- Thermal Equipment: Heat Exchangers, Boilers and Furnaces
- Stacks & Flares
- Wind Towers
- Steel Structures , Pipe Racks and Modules (Subsea Structures ...)
- Converters, Reactors







SOCOMENIN products are manufactured in different types of steel such as :Carbon , Stainless , Nickel, Alloys, Zecor, Duplex , Super Duplex , 254SMO etc ...for Oil & Gas and Petrochemical, Renewable energy, Water treatment & Energy projects and other fields.

SOCOMENIN has developed its work plants capacities in order to satisfy customers requirement.

## Key indicators

Total area	90 000 m <sup>2</sup>
Covered area	37 000 m <sup>2</sup>
Lifting capacity	120 T
Height under hook	13 m
Automatic welding machines up to	8m x 8m
Rolling capacity	60 mm
Production capacity	25 000 T/ Year
Blasting & Painting Capacity	300 000 m <sup>2</sup> / Year

Our work plants are dedicated to the engineering, Procurement and Manufacturing of various types of steel equipment including :

- Pressure Vessels
- Storage Bullets
- Platform
- Columns
- Boilers & Heat exchangers
- Separators
- Skid Mounted Packages
- Prefabricated Storage Tanks
- Manifolds & Ducts

## Platform For CSP



## Gas Storage Bullets





## Pressure Vessels



SOCOMENIN manufactures a wide range of pressure vessels, each built to fulfill codes and client specific requirement for both onshore and offshore exploitation.

Our pressure vessel product include:

- **Process Columns**
- **Fuel Gas Filters**
- **Gas Scrubbers**
- **Slug Catchers**
- **LP and HP Knock Out Drums**
- **Surge & Filter Vessels**
- **Reactors**
- **Boiler Parts**
- **Skid mounted separators**
- **Bullets**
- **Columns, strippers and towers**

The above mentioned products can be supplied with U, S and R as applicable or marked CE to meet PED requirement.



## Marine Gas Scrubbers





## Prefabrication Pipe Work



SOCOMENIN has a highly experienced team of pipefitters and qualified welders, which allows SOCOMENIN to offer a high quality pipework prefabrication services in Carbon Steel, Stainless Steel, Duplex, Super Duplex, ect....

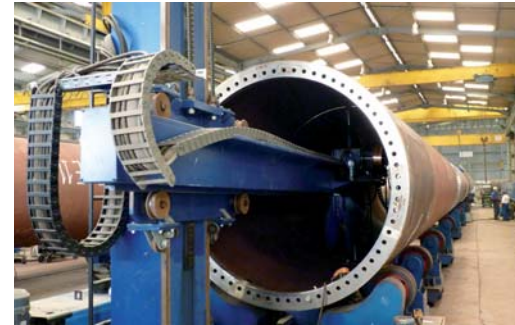


## Wind Towers

SOCOMENIN Wind Towers Division is specialized in the fabrication of tubular steel towers for the wind energy industry.

In our plant dedicated to serial production of wind towers, SOCOMENIN has a production capacity of 150 towers/year and this up to 6000 mm in diameter with high accuracy geometric tolerances.

Towers are delivered in sections surface treated including assembly of internals ready for erection







SOCOMENIN Structural steelwork plant is equipped with CNC drilling, cutting and marking unit with a capacity Up to 1000mm in width and with a total capacity of production up to 8000T / Year.

Erection on site



SOCOMENIN is fully compliant with International Standards and specifications such as:

- AISC codes and standards
- AWS D1.1/ D1.5
- DTU
- NORSOK M101
- EEMUA 158
- EEMUA 197

Painting shops



Assembly lines



Structural steel work for Rouis power plant



Packing



SOCOMENIN has strictly ensured the quality of its products are delivered to its customers. SOCOMENIN's Quality Department performs in-house inspection and testing of all products along the manufacturing processes starting from the reception of raw materials up to the finished product.



SOCOMENIN considers that each order is a specific project for which a Quality inspector team is assigned and a Quality plan is systematically prepared. Our personnel are qualified and certified as appropriate for specialties covering our scope as follows :

- International Welding Engineer IWE
- CSWIP 3.1 Welding inspector
- ACCP CP-189 Level 2 NDT inspectors for UT, MT and PT methods
- NACE Coating Inspector CIP Level 2
- ACQPA/FROSIO Inspector



## The Testing performed are:

### 1) NDT methods:

- Automated Time Of Flight Diffraction / Phased Arrays (TOFD / PA)
- Conventional Ultrasonic Testing (UT)
- Magnetic particle Testing (MT)
- Liquid Dye Penetrant Testing (PT)
- Radiographic test (RT)
- Laser Tracker (3 D Laser Measuring)
- Hardness test
- Positive Material Identification (PMI)
- Ferrite test



Phased Arrays (TOFD / PA)

### 2) Pneumatic leak test and Hydrostatic pressure test

### 3) Coating Inspection:

- Hygrometric condition monitoring
- Roughness testing
- Surface profile measuring
- Bresle test
- Chloride test
- Dry film thickness measuring
- Adhesion test (Pull-off)
- Holiday test (High voltage)
- Hardness test



Laser Tracker (3 D Laser Measuring)

## BLASTING

In order to keep-up to date with the new technologies, and to improve its products quality, SOCOMENIN Company has established three blasting shops using metallic grit with 300 000 m<sup>2</sup>/year capacity.



SHOT BLASTING



THERMAL SPRAYING

The three blasting shops are built according to international standard specifications for on-shore and off-shore use, and respecting the specific conditions of both humidity which could be controlled and salinity that could be fixed down to 3µg/cm<sup>2</sup>.

## PAINTING

The painting activity is done in 6 conditioned buildings according to the international standards and paint manufacturer's specifications for onshore and offshore use. Specific conditions, such as humidity and temperature are closely controlled.

These buildings are equipped with air heater generators used in the winter.



## RUBBER LINING

SOCOMENIN provides customers with high quality services in the application of rubber lining for corrosion and abrasion protection required in chemical processing and water treatment equipments.





## Storage

From the raw material arrival to the delivery of finished product, SOCOMENIN ensures the required logistical operations.



Raw material storage area 10 000 m<sup>2</sup>

SOCOMENIN is able to ensure the storage of all our customers project-related goods. With more than 10 000 m<sup>2</sup> of raw material storage area equipped with 03 gantries cranes and with more than 45 000 m<sup>2</sup> of finished product storage area located close to the SFAX harbor.



Finished products storage area 45 000 m<sup>2</sup>

## Export logistics

Packing, loading and delivery



In order to meet the European standards, we operate as per ISPM 15 standards for any packing operation

SOCOMENIN ensures the transportation of goods either by conventional and non conventional sea shipment or by land using special low-bed and standard trucks.



Land Transport



Sea Transport





## Construction & Maintenance Division

*Since its creation, SOCOMENIN was involved in large projects in North Africa. Its high level of expertise and project management and construction capabilities, combined with a responsive organizational structure and a policy of forging partnerships with local and international companies, has enabled SOCOMENIN to provide solutions to meet the wide-range needs of customers, from technical assistance & maintenance up to construction and provision of turnkey projects.*





## Engineering

SOCOMENIN offers Engineering and design services related to EPC Projects and Process equipment manufacturing covering:

- Basic Engineering: Mechanical, Electrical, Civil Engineering ...

- Detailed Engineering : Structural, Instrumentation, Mechanical, Piping layout...

SOCOMENIN is using CAD/CAE Design software packages that enable delivering high quality designs to customers.



## Design tools:

Drawings: AutoCAD/ Solidworks  
 Pressure vessel Design Software: PV ELITE  
 Atmospheric Storage Tank Design: AME Tank  
 Steady State and transient Hydraulic analysis: WANDA  
 Piping Flexibility analysis and stress calculation: CAESAR II  
 Steel Structure and concrete steel Design Software: ROBO BAT  
 Steel Structure Detailed Design: X-STEEL  
 Process Design: HYSIS  
 Finite Element Analysis: COSMOSWORKS/COSMOSM



## Procurement

The procurement department operates according to approved procurement manual, highlighting the following steps in chronological order: preparation of bidders list and RFQs, evaluations, negotiations, award and finally expedition and material control.



**The procurement scope of services covers the following activities**

### Purchasing expertise:

Globally source material & equipment from proven manufacturers.

### Expedition services:

Expedition delivery to ensure project is completed on schedule

### Logistical operations:

Manage logistics of delivering material & equipment to site

Quality inspection surveillance

### Project & Construction Management

SOCOMENIN provides project & construction management services for an entire project or tailored services for specific portion of a project.

SOCOMENIN project management teams objective is to fulfill projects according to contractual specifications in time and within budget.



Skhira terminal Tank Farm  
TANKMED - Tunisia

SOCOMENIN construction management teams are carefully selected according to the project scope. The company provides them with the necessary tools and documentation to ensure successful completion of the project.

### Project & construction management services

- Preliminary contracting & project management plan
- Change & risk management
- Cost estimating & value engineering
- Scheduling
- Quality assurance & integrity management
- Document control
- Project progress reporting procedures
- HSE activity coordination & site safety management
- Construction management
- Mechanical completion & Commissioning supervision

### Rehabilitation & Maintenance of Industrial Plant

SOCOMENIN is known for its efficiency in the maintenance and rehabilitation of various installations such as refineries, tank farms, petrochemical plants and cement factories.



**Safety first - Reliability - Quality - On time**



The maintenance activities include the revamping of industrial plants and technical assistance in Shut-downs .





# Fields Of Activities

SOCOMENIN provide services by Suppling, Manufactured products, performs part or complete Installation or Maintenance of Industrial plants in different fields:

## Oil & Gas and Petrochemical

Central Processing Facilities (CPF), Gas Treatment Plant (GTP), Refinery, Storage farms, Gas Oil Separation Plant (GOSP) , ...

## Water Industry

Pumping Station, Water Treatment Plant, Desalination Plant, Dams,....

## Power Generation & Renewable Energy

Power Plant( Gas Turbine, Combined Cycle, Thermal plant...), Electric Substations, Wind Farms, CSP, ....

## Chemical & Mineral Industries

Phosphate Industry (Phosphate Production Plant, Sulfuric and Phosphoric Acid Plant, Cement Plant,....

## Iron & Steel Industries

Steel Making Plant, Steel Mill Iron ,Material Stacking and Handling

## Food Industry

Dairy plants, Cow Farms, Sof Drink Plants, ...

## Fields Of Activities

### Oil & Gas and Petrochemical

#### Manufactured Products

- Pressure vessels:
- Storage tanks
- Offshore Equipments & Modules
- Steel Structures and Pipe Racks
- Heat Exchangers
- Stacks & Flares
- Piping prefabrication
- Skids & Modules



#### Construction Projects



GTP



Storage farms



Refinery



CPF



GOSP

## Water Industry

### Manufactured Products

- Sand Desalination Filters
- RO Structure
- Surge Vessels
- Pipespool
- Manifolds, fittings
- Cofferdam
- Sector Valves



### Construction Projects



Desalination Plant



Water Treatment Plant



Dam



Pumping Station

## Power Generation & Renewable Energy

### Manufactured Products

- Air Intake System
- Chimney
- Exhaust
- Piping Prefabrication
- Seawater Intake
- Steel Structure - GT Building
- Storage Tanks
- Pressure Vessel
- Wind Tower Sections



### Construction Projects



Gas Turbine Power Plant



Wind Farm



Substation



Thermal Power Plant



### Chemical & Mineral Industries

#### Manufactured Products

- Carbon & Stainless Steel Equipment
- Special Steel Equipment
- Storage Tanks
- Piping Prefabrication
- Ducts, Steel Structure
- Burner, towers
- Pressure vessels
- Flash cooler
- Separator
- Converter
- Conveyer
- Stacker



#### Construction Projects



Phosphoric Acid Plant



Sulfuric Acid Plant



Phosphoric Acid Storage



Cement Plant

### Iron & Steel Industries

#### Manufactured Products

- Heat Exchangers
- Ducts
- Piping
- Steel Structure
- Steel Equipment



#### Construction Projects



Reformer



Cooling Bed



Run Out Roller Table



Stacker & Reclaimer



## Food Industry

### Manufactured Products

- Stainless Steel Tanks
- Piping
- Steel Structure
- Steel Equipment



### Construction Projects



Soft Drink Plant



Dairy Plant



Dairy Plant



Cow Farms

We are committed to delivering high quality products and services, on time, and with the lowest possible cost, to the delight and satisfaction of our customers.

In order to achieve these objectives, we will :

» Perform timely and effective preventive and corrective actions on identified or potential problems throughout the business.

» Work with our suppliers and subcontractors to make sure their products/ services meet the same high standards that we set for ourselves.

» Strive to continuously improve the cost effectiveness of all our functions and processes.

» Adopt a quality-in-all-we-do philosophy and recognize each employee's responsibility for quality.

» Work to defined policies, procedures, and processes with an emphasis on continuous process improvement through individual and group contributions; customer, user, and subcontractor input as well as process and product measurements.

» Assure that there is a clear understanding of the customers' needs and expectations.







[socomenin.com.tn](http://socomenin.com.tn)

### Tunisia

---

SOCOMENIN - Headquarters  
Avenue Mohamed Hedi Khefacha  
3000 Sfax - TUNISIA  
T (+216) 74 101 100 - (+216) 74 498 162  
F (+216) 74 497 726 - (+216) 74 497 438  
E [marketing@socomenin.com.tn](mailto:marketing@socomenin.com.tn)  
E [industrial@socomenin.com.tn](mailto:industrial@socomenin.com.tn)

### Libya

---

SOCOMENIN - Branch office Tripoli LYBIA -  
ELFERNAJ  
E [tripoli@socomenin.com.tn](mailto:tripoli@socomenin.com.tn)

### Algeria

---

SOCOMENIN Algérie - Branch office  
Lotissement Cadat Villa N°99 - Rouiba -  
Alger  
E [filiale-algerie@socomenin.com.tn](mailto:filiale-algerie@socomenin.com.tn)